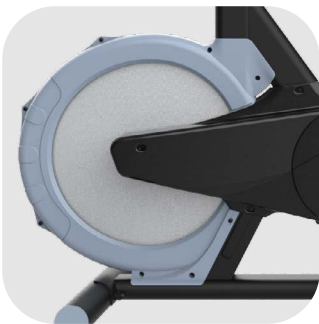


bodytone



DS07

SPINNING



DS07



Inspired by the movement of road cycling and triathlon, the DS07 is a high-performance indoor bike for athletes thanks to its rear flywheel.

The DS07 provides exceptional results for specific cycle training, high intensity interval training and endurance training.



MEASUREMENTS

135 x 55 x 115 cm

MAXIMUM USER WEIGHT

100 kg

INERTIAL WEIGHT

14 KG

BRAKE

Rear mono-skid brake.

SEAT

Millimetric saddle height and depth adjustment.

TRANSMISSION

POLY-V® belt drive system.

HEART RATE READING

Pulse sensors included in handlebars.

CONSOLE FUNCTIONS

TIME/ SPEED/ DISTANCE/ CALORIES/ RPM/ HEART RATE.

MAXIMUM HOURS OF USE

10 h/week.

MATERIALS AND FINISHES

It offers a unique set of features such as its splash-proof frame coating that protects against moisture damage, its POLY-V® belt drive system which through the 6 Poly-V ribbed belts with Kevlar cords are designed to deliver an incredibly smooth and fluid ride, with an extremely realistic feel. The Kevlar cords are stronger and last longer than the materials traditionally used in belt drive systems, resulting in a virtually maintenance-free product that does not need to be tensioned or lubricated.